

*Elizabeth M. Hewlett*  
*Chairman, Prince George's County Planning Board*

# Building Better Neighborhoods with Transit Oriented Development: Community Design and Process

*October 19, 2011*



# Overview

- M-NCPPC's **TOD**-related planning and parks and recreation activities
- How we are **building upon** these activities
- How we are forming **partnerships** to build better **neighborhoods** and a strong economic future
- My **vision** for the future of TOD in Prince George's County





Chairman,  
Prince George's County Planning Board



# Prince George's County



**Dynamic**

**Diverse**

**Innovative**



# Sustainable Quality of Life and Economic Future: Transit-Oriented Development (TOD)



Great public spaces



Vibrant, walkable neighborhoods



Expanded employment base



Vital retail and mixed-use centers



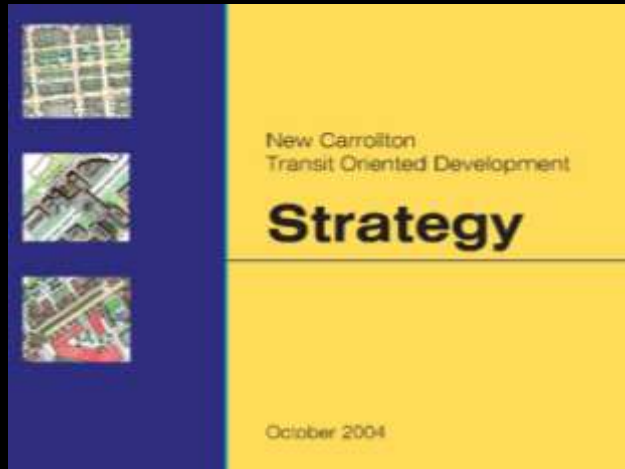
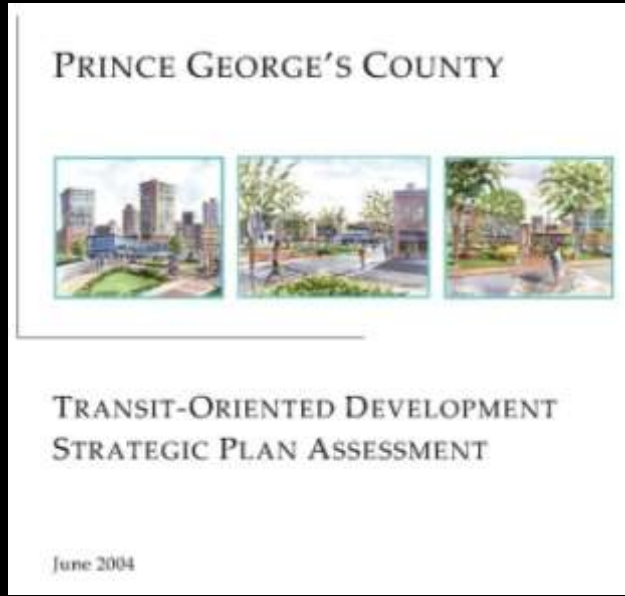
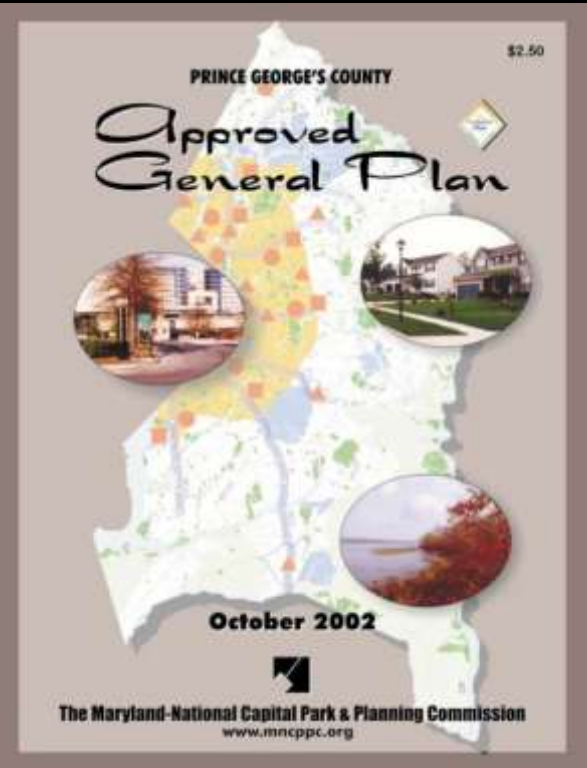
# TOD Experience



# Infrastructure Investment & TOD Planning



# TOD Planning

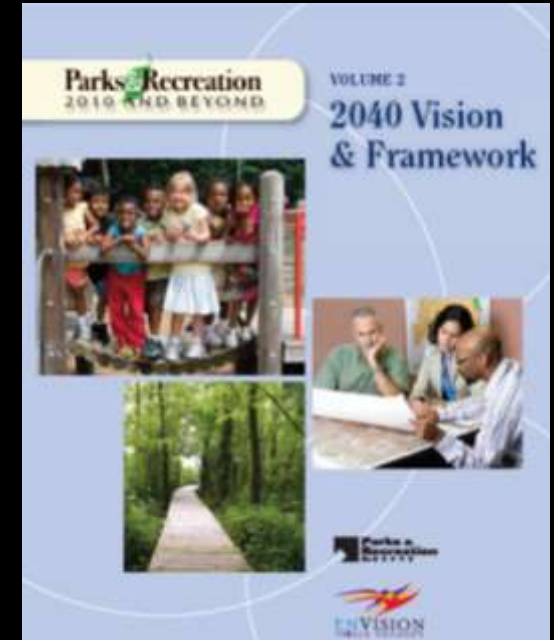
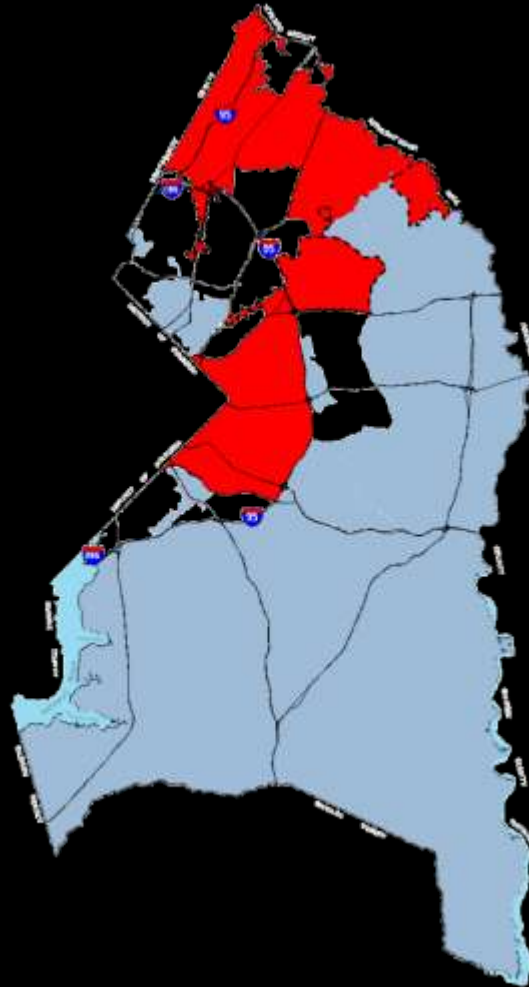


# TOD Planning

2010-Today



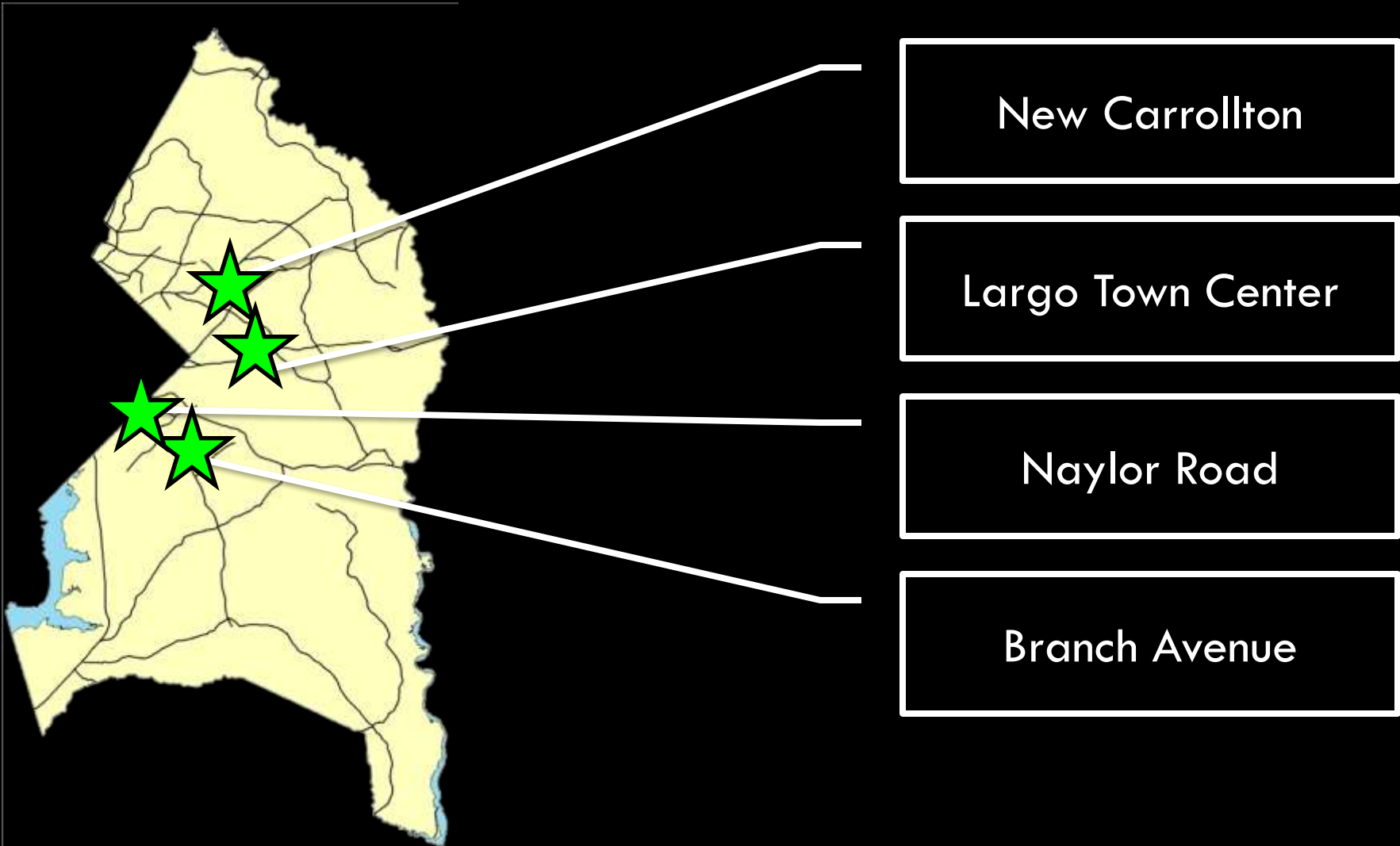
Subregion, Area, and  
Small-area Plans



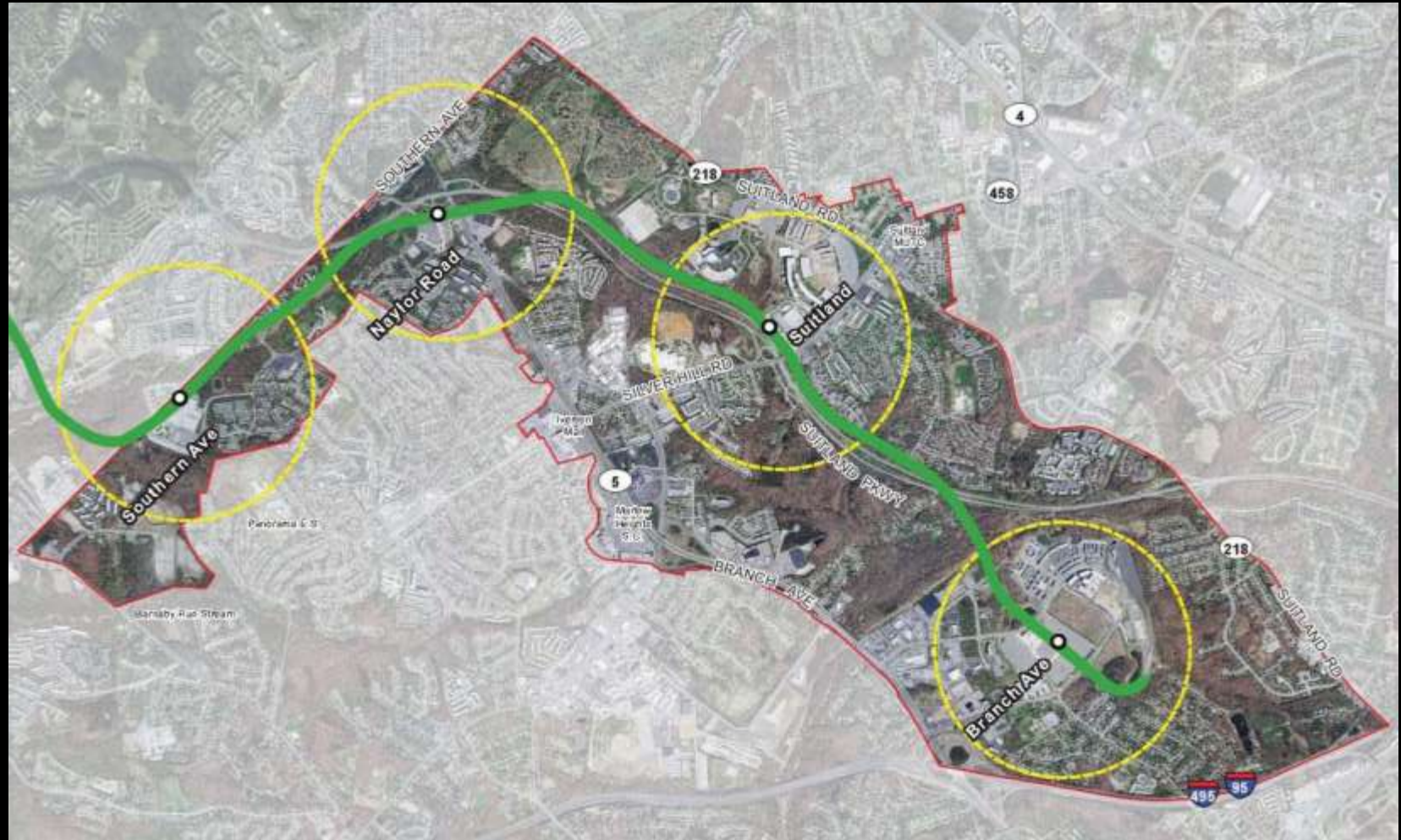
# From TOD Planning to Implementation



# Metrorail Station Priorities



# Green Line Transit Corridor Plan Implementation Project



# Central Avenue-Metro Blue Line Corridor



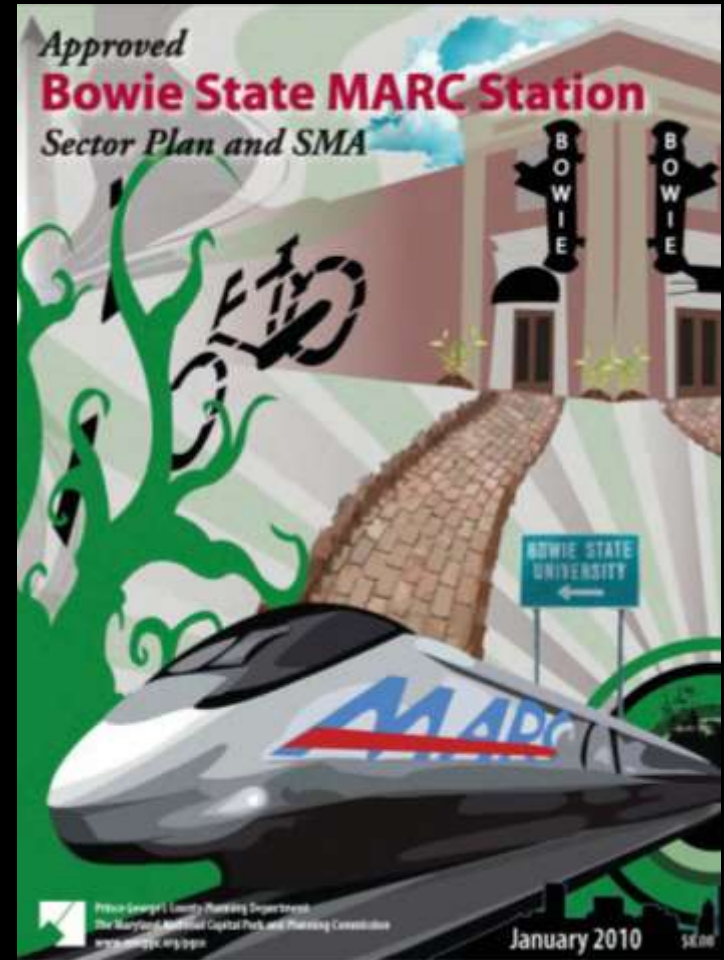
Largo Town Center Metro Station



# New Carrollton Metro Station Transit District Development Plan



# Other Implementation Initiatives



# Our **Vision** for TOD

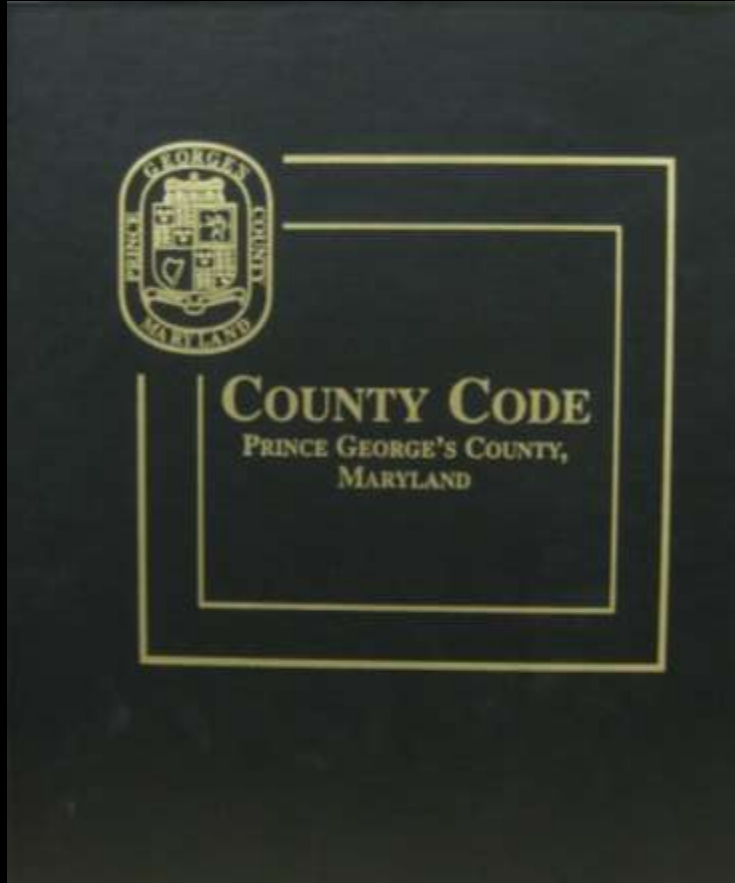




- Mixed-income projects
- Jobs
- Business opportunities
- Housing choices



# TOD & The Development Review Process



- **Effective, efficient** development review
- Ensure **compliance** with principles of **TOD**



# Engaging and Educating



- TOD & the General Plan vision
- Specific TOD proposals



# Current **Work** Program



# M-NCPPC is working to...

- Facilitate TOD at **priority stations**
- Revise plans and zoning to ensure compliance with **principles of TOD**
- **Improve** the development review process
- **Implement TOD-supportive recommendations** of approved plans
- **Support TOD corridors** through the Parks and Recreation Department's "Formula 2040 Master Plan"





***Prince George's County General Plan 2035***

- Specific **TOD** element to reflect Prince George's County's **commitment** to transit-oriented development



# Engage and Educate



## Transparency & Accountability



