

The NoMa Parks Foundation (NPF) is a 501(c)(3) nonprofit organization formed in 2012 to establish welcoming, sustainable, beautiful spaces where people can play, refresh and connect in NoMa, now and in the future.



## STAY ENGAGED

### PUBLIC MEETINGS

For each park project



### COMMUNITY CONVERSATIONS

Held several times each year and cover a broad range of NoMa Parks topics and projects

### ANC & CIVIC ASSOCIATION MEETINGS

NPF regularly presents or attends

## THE NEED FOR PARKS IN NOMA

**36,000** people within market area

**6,300** residents living in 3,836 apartment units

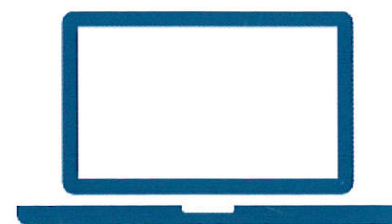
**54,000** total employees

**111,000** weekday average pedestrian count

**1,791** apartment units under construction within the BID

**#1**

**MOST DENSE MIXED-USE NEIGHBORHOOD IN DC AT BUILD OUT**



### NOMAPARKS.ORG

Our main website, with meeting materials, parks information, and background documents

### IMAGINENOMAPARKS.ORG

Our public engagement website, focused on park planning



## GETTING TO KNOW

# NOMA PARKS

 **NOMA CURRENTLY CONTAINS NO PUBLICLY ACCESSIBLE PARK SPACES.**

 **THE DISTRICT HAS 12.4 ACRES OF OPEN SPACE FOR EVERY 1,000 RESIDENTS.**

**PARKS ARE CRITICAL FOR THE FUTURE OF A GREAT, GROWING NEIGHBORHOOD.** 

**NOMA  
PARKS**

1200 First Street, NE  
Suite 310  
Washington, DC 20002

T 202.289.0111  
F 202.289.0113  
nomaparks.org

**JUNE 2016**



# PARKS ENVISIONED

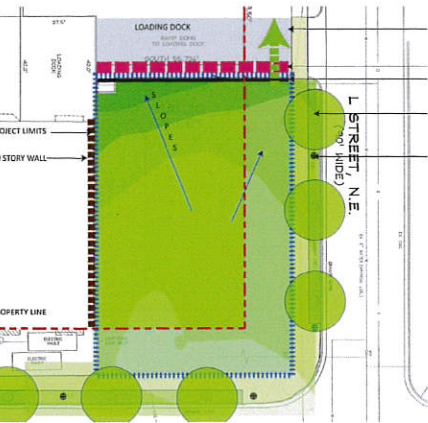
## NOMA GREEN

The NoMa Green will be a premier neighborhood park when built. Currently a 2-acre vacant parcel, the site will be the neighborhood "back yard," providing for outdoor recreation and community gatherings. An additional park at R Street NE and realignment of the Metropolitan Branch Trail are part of the park development.



## 3RD AND L

The future park is roughly 8,200 square feet, and will be a small multi-purpose neighborhood park when built. NPF selected Lee and Associates as designer for the site, and will be continuing to engage the community in the design process throughout 2016, with the goal of beginning construction in early 2017.



## NOMA MEANDER

This project will create a fun, inviting, four-block pedestrian promenade that runs north/south from Pierce Street to New York Avenue between North Capitol and First Streets, NE. The Meander will include green spaces, seating, retail and more. The Meander is being developed on both public and private property; the entirety will be publicly accessible.

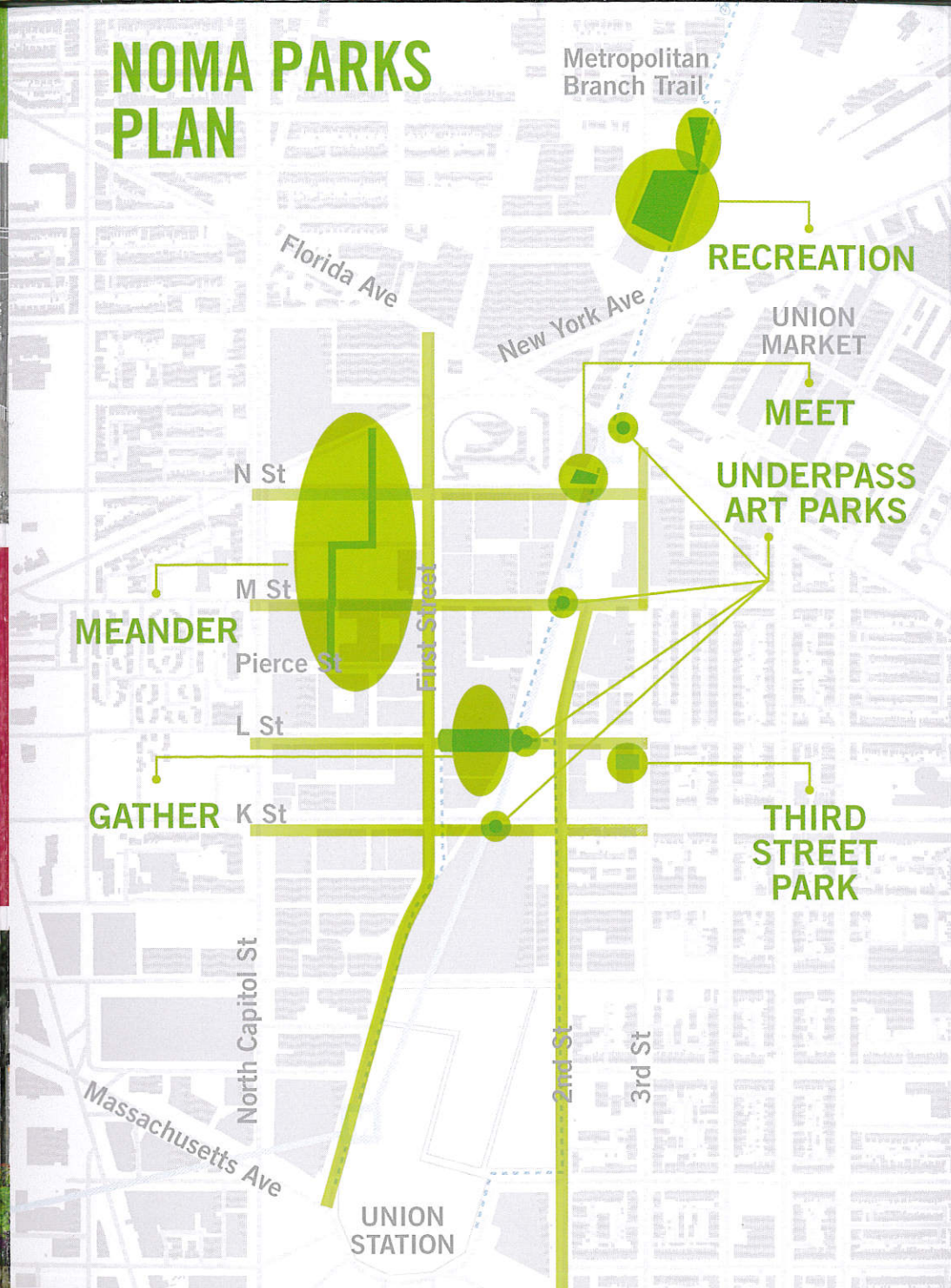


## UNDERPASS ART PARKS

Beginning in 2016, NoMa's four underpasses will be dramatically transformed. In 2014, 248 artists and designers from 15 countries participated in a competition to enliven NoMa's underpasses. Construction of the M Street Underpass will begin in 2016, and construction of the L Street Underpass will follow.



# NOMA PARKS PLAN



# KEY MILESTONES

### PLANNING

2011  
2012

American Planning Association Design Charrette

Public Realm Design Plan

Founding of NPF

\$490K DC Office of Planning Design Grant

### FUNDING

2013  
2014

Mayor proposes and Council approves \$50M capital grant

Grant agreement between NPF and District Government

### ACQUISITION

2015  
2016

Purchase of 3rd and L site

Purchase of NoMa Green site

Acquisition of R Street site

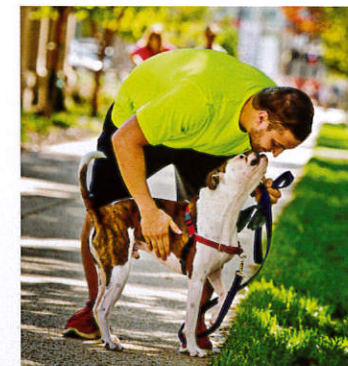
### DESIGN

2014  
2016

Underpass Art Parks Community Meetings

Community Conversations

Design started on 3rd and L site



# PARKS AS A SYSTEM

Parks in NoMa will incorporate the best available thinking on urban parks, public safety, accessibility, sustainability, and ease of maintenance. NoMa parks will be evaluated in terms of their ability to bring neighbors together as a community and to satisfy individual and family needs for recreation and public space.

NPF views parks for the neighborhood as a system, and the NoMa Public Realm Design Plan serves as the framework for developing parks in the neighborhood.

# GOVERNANCE

**NoMa Parks Grant Authorization Act of 2013:** Provides funding and adopts the NoMa Public Realm Design Plan as framework for park development.

**NoMa Parks Grant Agreement (2014):** Agreement between the NoMa Parks Foundation and the District of Columbia Government; describes parks projects, establishes a budget, and lays out acquisition, design, construction, and operations processes.

NPF meets regularly with District partners, local elected leaders, and residents, and has an active Board of Directors.

FOR MORE INFORMATION ABOUT OTHER PARKS BEING PLANNED, VISIT [NOMAPARKS.ORG](http://NOMAPARKS.ORG)