

Housing Supply & Affordability

January 22, 2026

Kathryn Howell, PhD

*Executive Director, National Center for Smart Growth
Associate Professor, Urban/Regional Studies & Planning
University of Maryland*





Does more housing make housing more affordable?

- Yes and no - because...
 - For whom?
 - Where?
 - When?

DC accounted for nearly a third of total production; Loudoun + Fairfax + Montgomery another third

Total Housing Units Produced, Greater DC Area, 2019-23

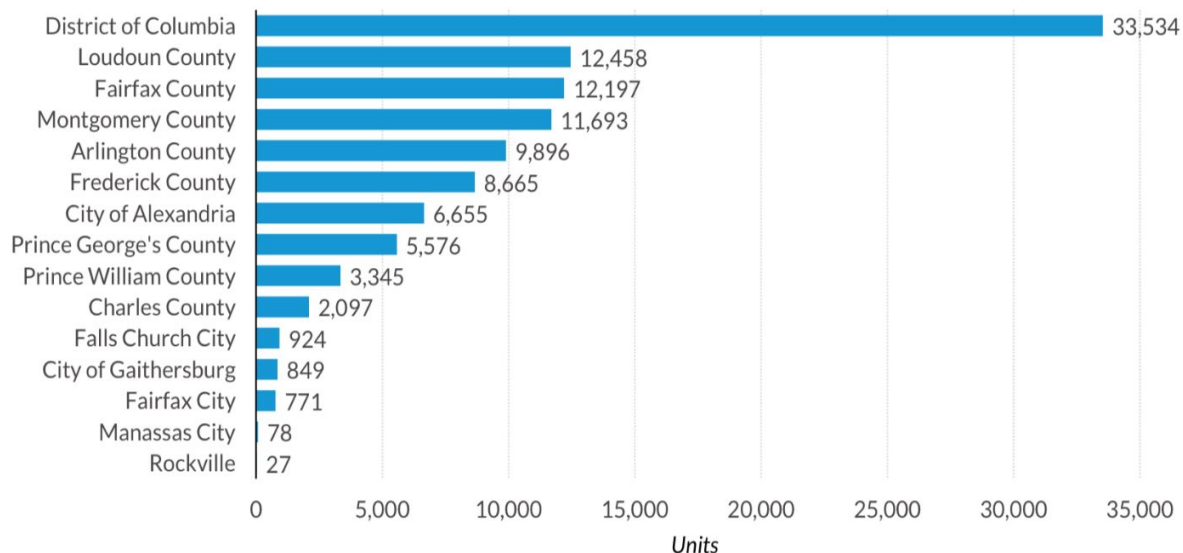
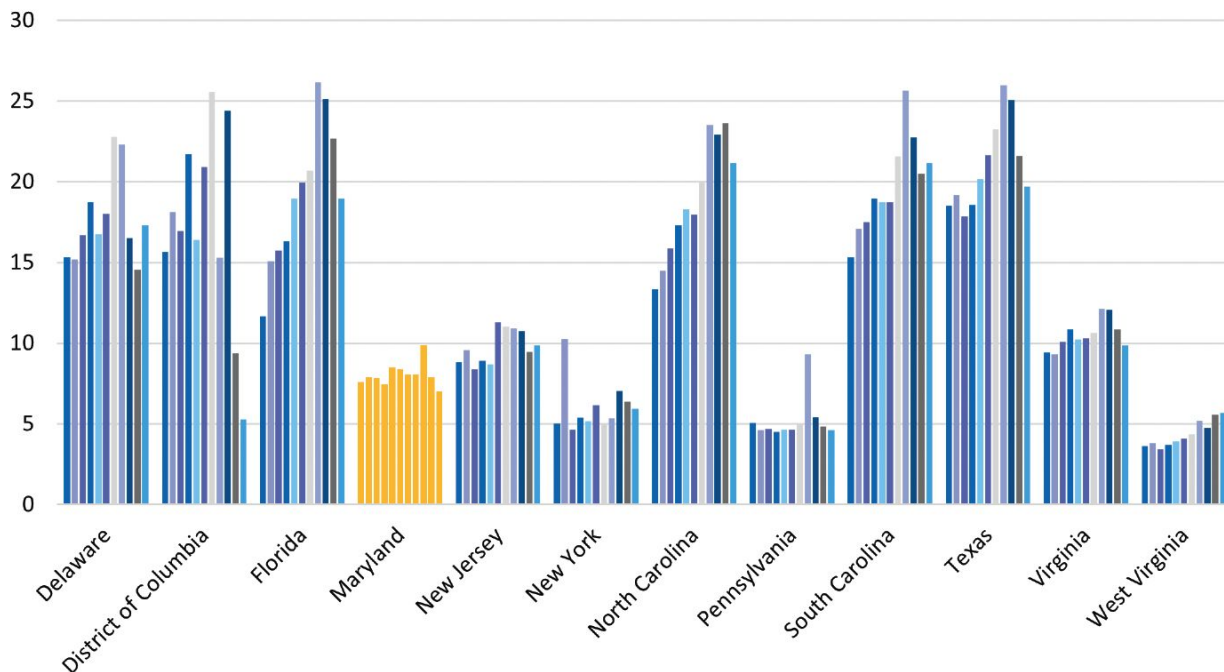


Figure 24: New Units Permitted per 1,000 Households by State (2014 to 2024)



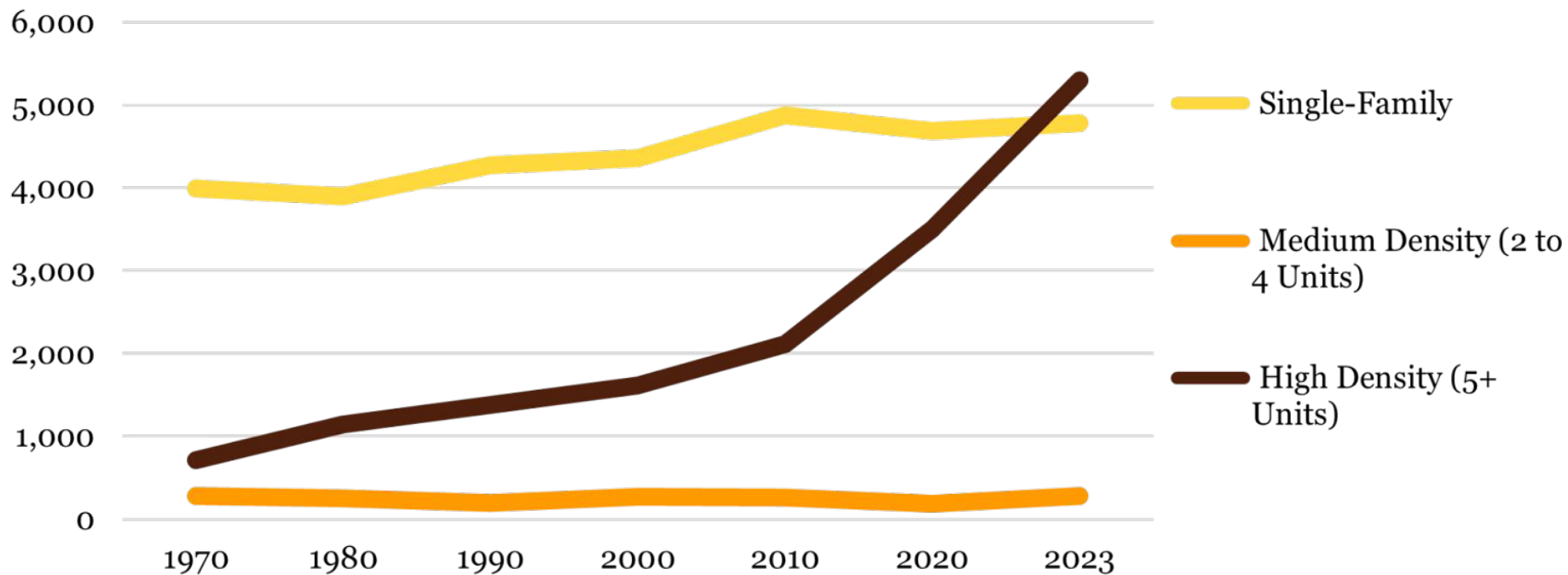
Source: U.S. Census Building Permit Survey; American Community Survey (ACS) 5-year estimates and 2024 1-year estimates, B11001 Note: Each bar represents a year, years 2013 to 2024



Why is housing still so expensive



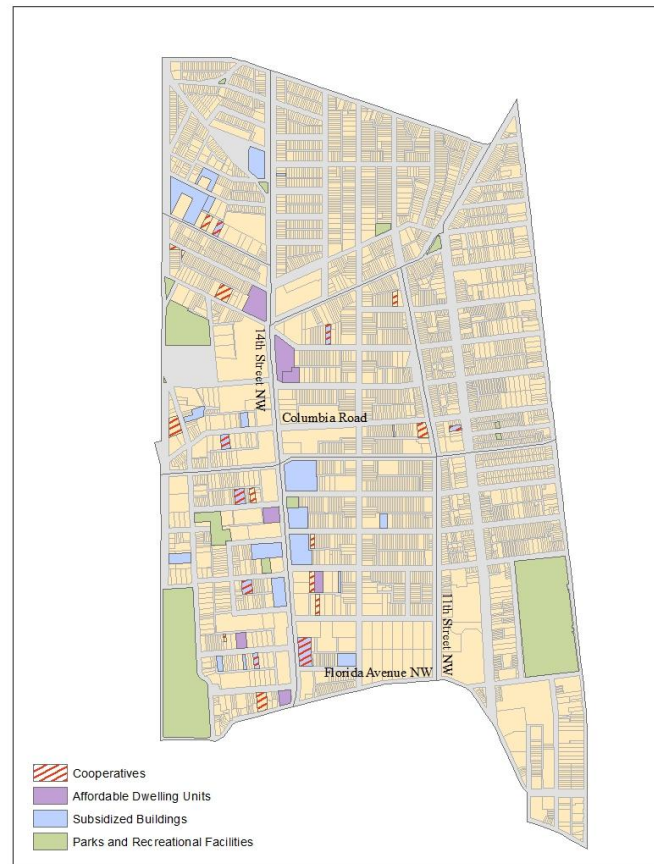
College Park, MD





Columbia Heights, DC

- >35% increase in housing
- >20% Income-restricted





Housing Gaps

Statewide shortage of
*610 available and
affordable homes* for
every 1,000 extremely
low-income renters

County/PUMA	Extremely Low-Income (0-30% AMI)	Very Low-Income (30-50%)	Low-Income (50-80% AMI)
Anne Arundel	-636	-613	-214
Baltimore County	-749	-506	-548
Baltimore City	-515	-342	-654
Calvert	-672	-324	-328
Carroll	-522	-440	-812
Cecil	-706	-106	-387
Charles	-222	-456	-640
Frederick	-573	-504	-431
Harford	-583	-556	-601
Howard	-767	-763	-252
Montgomery	-762	-447	-449
Prince George's	-772	-168	-697
St. Mary's	-483	-780	-439
Combined County PUMA			
Western Maryland	-163	-445	-783
Upper Eastern Shore	-153	-408	-635
Lower Eastern Shore	-576	-258	-283
Statewide	-610	-394	-541



Kathryn Howell, PhD
Executive Director, NCSG
klhowell@umd.edu